



Wellington Methodist Parish News
Sunday 2 April 2023



www.wesleychurch.org.nz



EASTER SERVICES

Good Friday Service

(Combined) 7th April 2023,
10am

Worship Leader: Nicola Teague
Grundy

Door Stewards: Tongan
Congregation

Flowers: 10am Congregation

Easter Sunday Service

(Combined), 9th April, 10am

Worship Leader: Simote
Taunga

Door Stewards: 10am
Congregation

Flowers: 10am Congregation

Meetings & Events

Parish

Parish Council Meeting—
today, 2 April after refreshment,
in the Chapel.

**Lower North Island Synod
Meeting**— 14 - 16 April. In
New Plymouth. Theme “So
what’s the story”. Everyone
welcomed to attend.

Finance & Resources—
Wednesday 26th April, 7pm on
zoom

**10am Congregation
Leaders Meeting**—Tuesday

Ministry Team

Rev Utumau’u Pupulu, (Parish

Superintendent)

021 842 883/

utumauu.pupulu@wesleychurch.org.nz

Rev Nicola Teague Grundy (10am Presbyter)

021 274 1957 / 04 242 0176

nicola@wesleychurch.org.nz

...

Rev Simote Taunga (Tongan Presbyter)

021 033 3385/ simote@wesleychurch.org.nz

Parish Office

Office staff: Uiesemaalii Holmes
& Sarah Laurenson

Custodian: Sitiveni Pouvalu
027 724 9986

Office Hours: Tuesday to Friday
10am to 3pm

75 Taranaki Street, Te Aro, Wellington 6011
04 384 7695 / office@wesleychurch.org.nz



Wellington Methodist Parish News
Sunday 2nd April 2023

www.wesleychurch.org.nz



18th April, 7pm on zoom

Samoan Congregation

Lay Preachers bible sessions —
Wednesday 12th April

Women's Fellowship convention—

Friday 21st to Sunday 23rd, in
Auckland.

Reginal Lay Preacher Sunday—
Sunday 30th.

'Sunday School every Sunday'

Fijian Congregation

Palm Sunday Celebration— Today
at 3pm, in church.

Confederacy Service (Led by the
Tovata Confederacy) —Sunday 16th
April, 4pm , in church

**Tabacakacaka Jeserieli Circuit
Meeting**—Saturday 22nd & 23rd
April, held at Wellington Wesley
Parish.

Tongan Congregation

Easter Camp — Friday 7th to 10th
Monday, held in New Hall & Old
Hall.

OTHER:

DCM Transformation Tuesday—

Every Tuesday we run a poetry
workshop from 10:00am to 11:00am.
These workshops nurture our
whānau's creative spirits and are full
of meaningful kōrero, encouraging
cultivation of emotional and spiritual
wellbeing. On our whānau's journey
to being housed, connected, valued
and thriving we want to provide care
for not only the physical side of
wellbeing but other sides of wellbeing
too. This is in line with Te Whare
Tapa Whā, the Māori model of health
which focusses on physical, spiritual,
social and mental/emotional
wellbeing.

DCM FOOD BANK

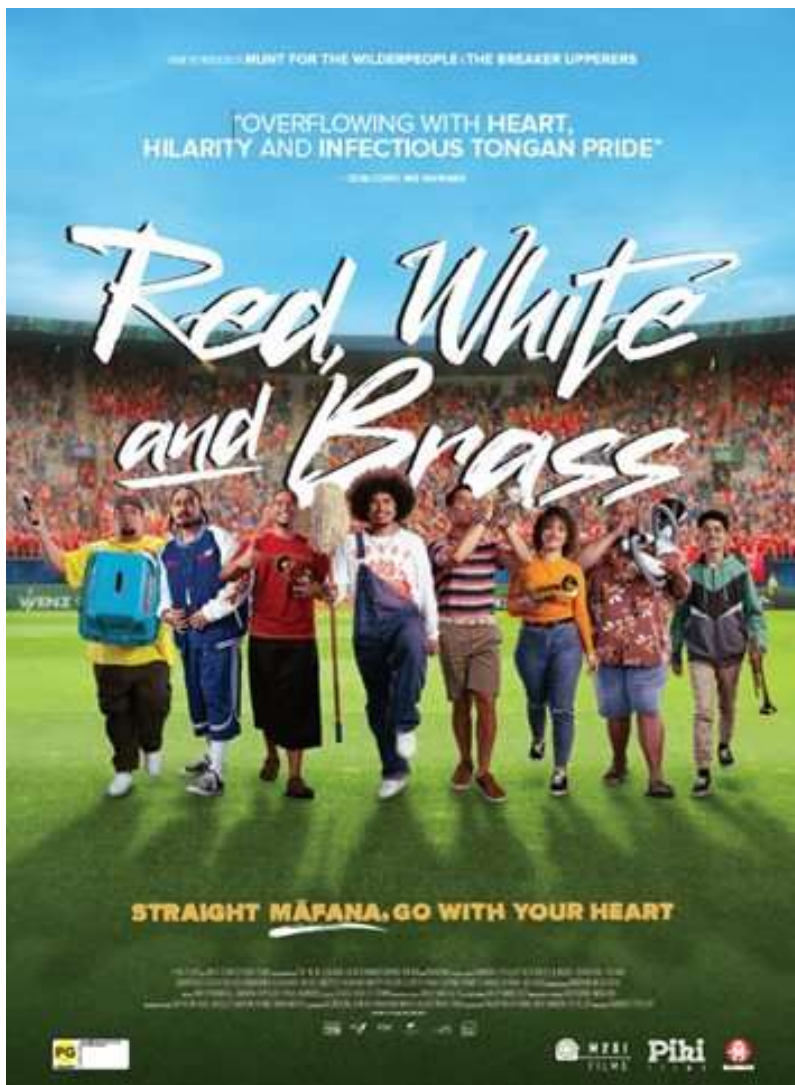
Please help restock busy foodbank
shelves with the following items

- Ready meals/soups
- Instant noodles
- Tinned fish
- Coffee, tea, milk powder
- Biscuits and crackers
- Washing powder

CARPARK STICKERS

Carpark stickers have been given out
to each congregation. If you have any
questions please contact your
Congregation stewards.

Thank you for coming to our service!
Please make sure you have our car pass on your dashboard.



‘10AM FUNDRAISER’

**Light House Cinema Cuba
29 Wigan Street, Wellington
SUNDAY 16TH APRIL 6PM
OR**

**WED 19TH APRIL 6PM
TICKETS \$20—\$25**

(YOU'RE INVITED TO PAY WHAT YOU CAN)

**Tickets available after church
from Sarah Laurenson
or
Hugh Laurenson.**

EFTPOS & CASH SALES

Thank you for coming to our service!
Please make sure you have our car pass on your dashboard.

Wesley Community Action Great to see Fruit & Veg Co-Ops Wellington featured in Stuff today. There are 10 packing hubs in the greater Wellington region - including Kapiti and the Wairarapa. Definitely worth checking out!

https://www.stuff.co.nz/national/131428972/community-coops-15-fruit-and-veg-box-a-cost-of-living-crisis-godsends?fbclid=IwAR3DAcmBGFRLxtfEivVJLiUpK_kLY1eQRKzmACRmh1rj_OJqsLtQZk72FN8



Te Waka Kotahi - we're all in the boat together

Our specialist foster-care programme for young people aged 12 to 17 in the care of Oranga Tamariki provides an opportunity for young people to form positive connections that allow significant changes to occur.

Te Waka Kotahi believes that everyone connected to a young person – including their whānau, foster parent, mentor, social workers, Oranga Tamariki and school or college – is working towards a common goal: to bring this precious young person safely to the shore where they can heal and grow strong.

In all cases, we work with young people and their whānau for one year. During this year the young person lives with a foster parent and goes to school, college or special day programme, depending on their needs.

As well as one-to-one foster care, we also care for up to three young people at Te Whare Whakapakari, our group home in Tawa.

Interested in becoming a foster parent? If so

Visit Link

[Te Waka Kotahi / Foster care - Wesley CA](#)

Touchstone

April Touchstones now available at the back of church. You are welcome to take one :)